

This is how you use The self-service Library

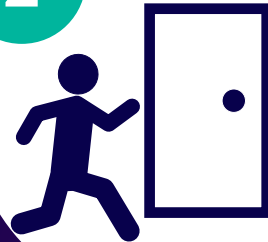
Further information at the staff/student intranet

1



Show the library card / mobile card at the door

2



3



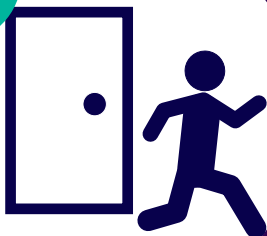
Borrow and/or return material

4



Follow the self-service machine's instructions

5



6



If the gates sound an alarm, return to step 3

3

Do not take material that make the gate alarm go off outside the Library!

* The self-service Library is a service for staff and students