

# GamePit<sup>PRO</sup> by jamk

INSTRUCTION FOLDER / ENGLISH

# WELCOME TO GAMEPIT!

## Address

**Jamk University of Applied Sciences**

**GamePit Pro, AP05**

Rajakatu 35

40200 Jyväskylä

**Only loading and unloading vehicles are allowed near the GamePit door. There are 10 spots located behind the C-wing, accessible through the wing from 8 AM to 10 PM with GamePit access cards. No parking permit is required.**

You can order food directly on site via Wolt or Foodora! Add delivery to A3 door to your order notes.

The smoking place can be found in the middle of the parking area under a lamppost. If necessary, 2 umbrellas are available at the GamePit interior door to borrow during the reservation.

RAJAKATU 35, JYVÄSKYLÄ

## Pääkampus Main Campus

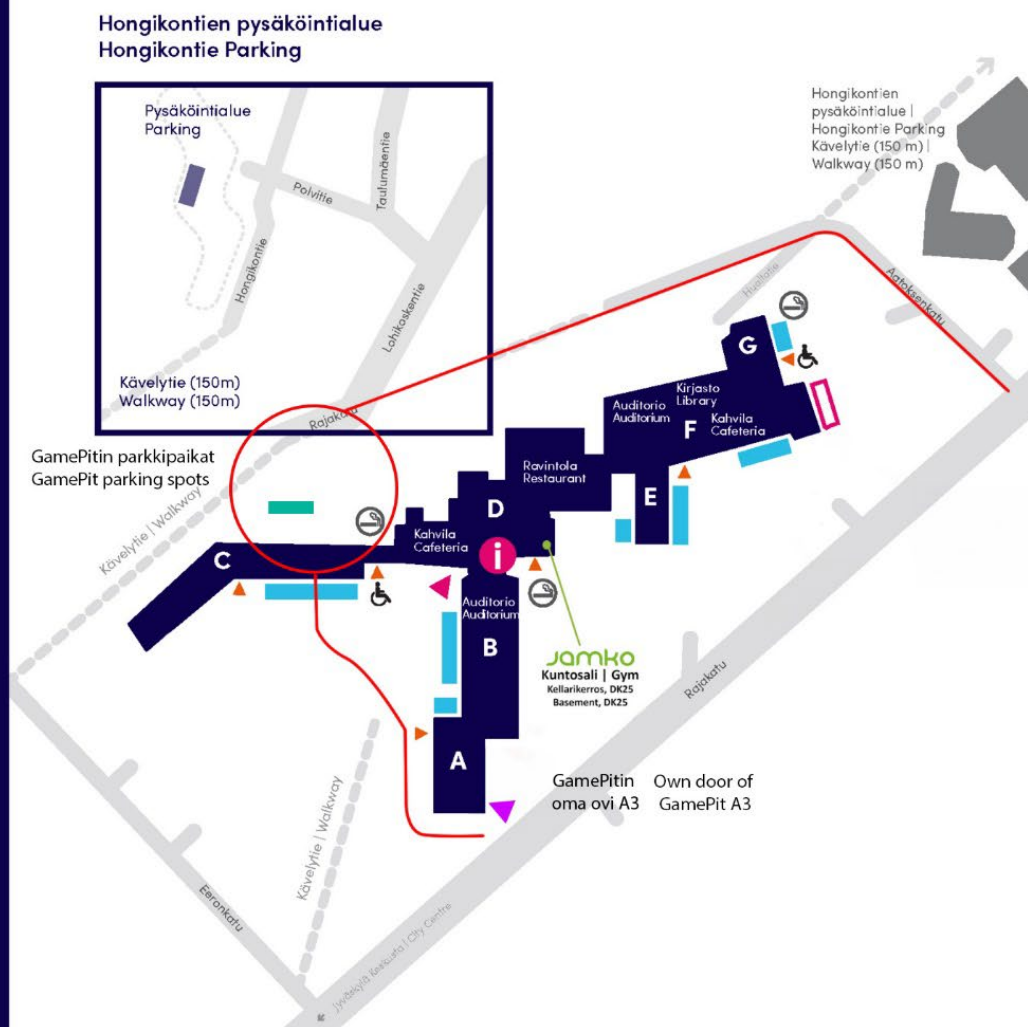
### Pysäköinti | Parking

- henkilökunta | staff
- vieraat | guests
- opiskelijat | students
- inva | disabled parking
- kiekkopaikka | time limited parking
- palkupyörät | bikes
- varatut paikat | reserved parking

### Muut merkit | Other markings

- pääsisäänkäynti | main entrance
- vaihtoehtoinen sisäänkäynti | optional entrance
- invalidi | handicap access
- info
- tupakkapaikka

Vierailija, haethan pysäköintiluvan lähimmästä infosta | Guest, please get the parking permit from nearest information desk



Veerti Pekonniemi

Phone number 0504414392

Email address [veerti.pekonniemi@jamk.fi](mailto:veerti.pekonniemi@jamk.fi)



## Janitors

Mika Liedes

Phone number 0405570822

Email address [vahtimestarit@jamk.fi](mailto:vahtimestarit@jamk.fi)



## Securitas security services (in case of disturbances)

Phone number 020 491 2600

# SAFETY PLAN

Your safety is our top priority, so please read the attached safety plan carefully. Please also read the rescue plan attached to this folder, which includes the emergency exits and the locations of the fire extinguishing equipment in the facility.



**IN EMERGENCY, ALWAYS REMEMBER TO CALL 112!**

# EQUIPMENT LIST

## GamePit facility

- PC setups for 12 + 6 persons, extra setups available for an extra fee
- Console corner:
  - Two PS4 Pro consoles
  - Two 27" Voxicon screens
  - 65" TV + home theater system
- Meeting and lecture facility:
  - Large movable TV + home theater system
  - Fixed 98-inch TV
  - Genelec sound system
  - Movable tables and chairs
- Accommodation:
  - Two sleeping areas, each with 2 bunk beds and in total 4 electric air mattresses
  - Accommodation can also be expanded for 12 + 6 people
    - 6 more electric air mattresses
- Red Bull refrigerator
  - 12 complimentary drinks in the cooler for weekend bookings
  - Red Bull drinks are also available for purchase via QR code or billed separately based on consumption
  - Lower shelves of the refrigerator are free to use
- Basic equipped kitchen in room AP03
- No oven or stove
- Shower and toilet adjacent to the kitchen area
- Own entrance through door A3

## Kitchen area

- Two coffee makers
- Kettle
- Refrigerator
- Microwave
- Water point and sink
- Dishwasher
- Tableware and utensils
- Mixed and bio waste bin

# GENERAL INSTRUCTIONS

## Own entrance through door A3

- Access to the gaming area is through door A3 using an access card and the code marked on the card.
- Reservation starts at 9:00 in the morning, check-out by 24:00 (does not apply to overnight bookings).
- Do not prop the exterior doors open. After two minutes of being left open, a security company will be called, and the customer will be invoiced (€50 + VAT).

## Access during the reservation

- Access between the gaming area and room AP05 is permitted. Remember to have the access card to pass through the dividing door!
- Exiting through the glass door of space AP05 to Jamk's corridor is prohibited (unless additional restrooms have been designated for use).
- Unauthorized access to other facilities at Campus triggers an alarm to the security company, resulting in an invoice to the customer.
- Exceptions regarding access outside the premises are agreed upon separately.

## Parking

- Loading and unloading vehicles is allowed at the GamePit entrance for 15 minutes.
- Parking is available behind Wing C in the designated staff spaces according to the attached map. No parking permit is required.
- Parking behind Wing C is allowed from Friday 2:00 PM to Sunday 11:59 PM.
- Any exceptions to parking regulations (e.g., events lasting over the weekend) will be communicated separately.

## Eating and drinking at gaming stations is prohibited!

- Customers are responsible for damage caused by themselves, such as spills onto equipment.

## Waste Management

- General waste in mixed waste bins, several bins are located around the gaming area and in the kitchen area.
- Empty bottles into the large green waste bin and empty cardboards into the orange waste bin.
- Biodegradable waste into the recycling bin in the kitchen area.

# DEPARTURE CHECKLIST

When leaving the gaming facility after your rental period, the space should be returned to the same condition as it was when you arrived. This will facilitate cleaning and ensure seamless rental for the next customer. **If the premises are left in untidy condition, the lessor reserves the right to charge an additional cleaning fee of €200 in accordance with the agreement.**

## Equipment Check

1. Log out of all personal accounts, including from the browser
2. Remove your personal accessories and reconnect GamePit's devices back to their places
3. Turn off the computers
4. Adjust the standing desks to sitting position
5. Place the chairs against the tables

## Sleeping Area Check

1. If you use air mattresses, deflate them
2. Pack the mattresses back and place them to accommodate facilities
3. Remove your own sheets and bedding
4. Make the beds
5. Leave the sliding doors of the sleeping areas open

## Kitchen Check

1. Take the dishes from the rooms to the kitchen
2. Wash the used dishes / use dishwasher (turn on the tap)
3. Place the dishes back into the cabinets
4. Dispose the waste in their designated bins in GamePit or kitchen
5. Recyclable bottles into the green bottle bin in the GamePit

## General Cleanliness Check

1. Close open windows and adjust curtains as they were upon arrival
2. Close the lids of the trash cans. If the trash bins are too full, additional garbage bags can be found in the cabinet next to the cardboard recycling bin
3. Ensure all your personal devices are with you
4. Turn off the lights at the facility. The switches for the LED lights are at different ends of the space

**RETURN ACCESS CARDS TO THE MAILBOX NEAR THE ENTRANCE!**

## **WIRELESS NETWORK -WIFI**

### **GamePit Wifi**

**Name: JAMK-guest**

**Password: jamk2018**



# USING COMPUTERS

- When you start/restart the computer, wait until the gaming center view appears on the screen. Do not click anything on the desktop—just wait for iCafe to launch.
- Do not log out of the gaming center system (iCafe) from the top-right corner. If this happens, restart the computer.
- If you want to install your own software, the computers may suggest the E: network drive but install it to the C: drive instead. You may need to add C: as an installation location for applications like Steam. The venue has a fast network but note that a launcher's own download servers may not be equally fast.
- Installations made on the E: drive is slow, and launching games on other machines at the same time may cause instability. Installations on the E: drive also do not persist between restarts.
- When you finish using the computers at the end of your reservation, remember to log out of any applications you used, such as Steam, Discord, FaceIT, etc. Our staff will also check the computer afterward.
- For most potential issues, a restart helps. You can do this directly using the small reset button next to the power button.
- You can shut down the computer either by pressing the power button or normally via the Start menu using "Shut Down."

# PC GAMES

PC games have been installed and updated on the computers in advance. It is recommended to use your own personal gaming accounts for playing. If necessary, you can also use GamePit's gaming accounts, which are available upon request during the guidance.

## Steam

Counter Strike 2  
Dota 2  
Tom Clancy's Rainbow Six Siege  
Apex Legends  
Age of Empires 2 HD  
Aimlabs  
Brawhalla  
Crab Game  
Slay The Spire  
THE FINALS  
Garry's Mod  
Halo Infinite  
Halo: The Master Chief Collection  
Just Act Natural  
Balancelot  
Left 4 Dead 2  
Old School Runescape (myös Runelite)  
Overwatch 2 (myös Battlenet)  
Payday 2  
RV There Yet?  
Quake Live  
PUBG: BATTLEGROUNDS  
RISK: Global Domination  
Runescape  
SMITE  
Speedrunners  
Splitgate  
Star Wars: Battlefront 2  
Titanfall 2  
Trine 1, 2, 3  
Valheim  
Warframe  
Enemy Territory  
Wolfenstein: The New Order  
Worms Armageddon  
Worms Ultimate Mayhem

## Battle.net

Overwatch 2 (myös Steam)  
Hearthstone  
World of Warcraft + classic  
Starcraft 1, 2  
Call of Duty Warzone 2.0  
Diablo 3  
Heroes of the Storm

## Riot Games

League of Legends  
Teamfight Tactics  
Valorant  
2XKO

## Ubisoft Connect

Tom Clancy's Rainbow Six Siege

## Muut

Runelite (myös Steam)  
Jagex Launcher  
Pro Pilkki 2  
MTG Arena

## Epic Games

Fortnite  
Fall Guys  
Rocket League  
Godlike Burger  
Hogwarts Legacy

## Battlestate Launcher

Escape from Tarkov  
Wolfenstein:

## Game Center

World of Tanks

# PC APPLICATIONS AND PROGRAMS

Spotify  
Blender (also in Steam)  
Gimp 2  
FacelT/AC (local installation)  
Esportal (local installation)  
OBS  
Streamlabs  
Discord  
Teamspeak 3  
Blitz

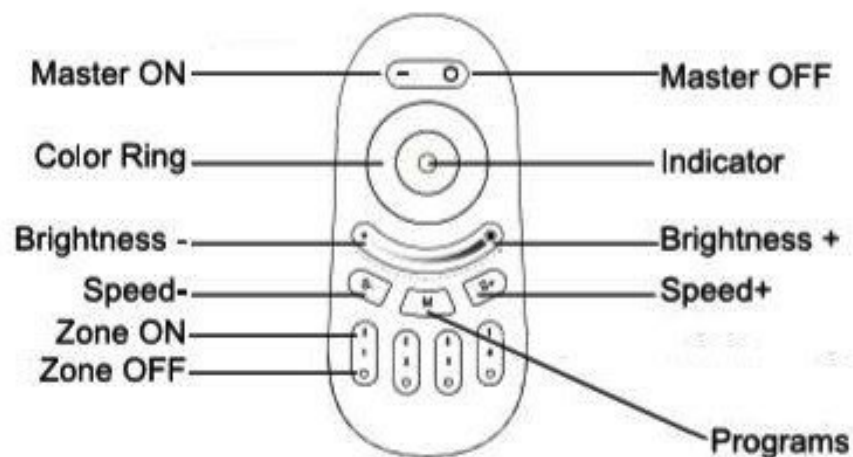
## CONSOLE GAMES

PlayStation 4 games have been downloaded onto the consoles digitally. Some installations have been made only on one of the consoles, and this is indicated in the accompanying game list.

NHL 20  
FIFA 20  
Apex Legends  
Fortnite  
Fall Guys  
Rocket League  
Brawhalla  
Crash Bandicoot 4: It's about time (PS4 – console 2)

# MANUAL FOR LED LIGHTS

## Function of Keys



## Program List

***Program 1 ( RGBW Fade In Fade Out)***

***Program2( Color Flash)***

***Program 3 ( Disco)***

***Program 4 (Red Color Ramp up and Flash)***

***Program 5 (Green Color Ramp up and Flash)***

***Program 6 (Blue Color Ramp up and Flash)***

***Program 7( Color Change+ Flash)***

***Program 8 ( Fade In and Fade out)***

***Program 9 (Strobe White)***

# RENTAL PRICE LIST

For more information, contact [esports@jamk.fi](mailto:esports@jamk.fi) or 0504119162 / Elmo Hämäläinen  
The facility and equipment are rented in their entirety. Prices include 25,5 % VAT.  
Reservation includes introduction of the facility, ex. guidance.

Also, inquire about catering services for your reservation. Breakfast, lunch, and dinner options are available and can be delivered directly to the GamePit space as needed.

<b>3-hour reservations</b>	
12 setups	130 €
12 + 6 setups	180 €
<b>Extra hours</b>	
12 setups	35 €
12 + 6 setups	50 €
<b>One day from 9am to 12am (no accommodation)</b>	
12 setups	450 €
12 + 6 setups	600 €
<b>Weekend including accommodation from fri 09am to sun 10pm (inc. cleaning fee 100 €) 12 setups</b>	1300 €
<b>Extra setups as a part of weekend reservation (max. 6 setups)</b>	50 € / pers / reservation
<b>Extra days as a part of weekend reservation</b>	250 € / day
<b>Guidance and assistance during booking</b>	
Mon-fri (8am to 4pm)	60 € / h
Mon-thu (4pm to 10pm)	90 € / h
<b>Meta Quest 2 virtual headsets (1-4 pcs available)</b>	50 € / pcs

GamePit reserves the rights to price changes.  
Cancellations made within 7 days will be charged 50% of the reservation price.

# DISCOUNTS

## Student Discount

- The student discount is valid for secondary school students and university students regardless of the educational institution.
- By showing a valid student card when making a reservation, you will receive a 20% discount off the price of your reservation.
- The student discount can be used for all services mentioned in the price list (except for esports-coaching).

## Staff Discount

- The staff discount is intended for Jyväskylän University of Applied Sciences (JAMK) staff members.
- By showing a JAMK staff ID card when making a reservation, you will receive a 20% discount off the price of your reservation.
- The staff discount can be used for all services mentioned in the price list (except for esports-coaching).

## 3 + 1 – Bonus System

- By making 3 bookings within a year, you will receive one additional booking of the same quality for free.
- The free booking must be made within 6 months of your third booking.
- Ask for more details about our bonus offers!

## Partnership Discount

- We offer our partners a 20% discount on the list prices of the GamePit Pro gaming space. (This also applies to the 3 + 1 bonus offer)
- Extra days in connection with weekend bookings: €125 (normal price: €250)

# RED BULL -DRINKS

Red Bull products can be purchased by scanning the QR code on the refrigerator door with your phone. They will be checked by GamePit after the booking, and any remaining unpaid items will be billed based on consumption.

- Can Cooler - Free Tastings in the Cooler  
Free tastings in the can cooler based on the number of people (max. 12 pers), **only for weekend bookings**
- Red Bull Drinks from the Large Cooler - All Flavors €2.30 each

**All Red Bull drinks**

**2,30 € / pcs**



**New payment method via QR code. Scan the code with your  
phone's camera to pay!  
(Not MobilePay)**

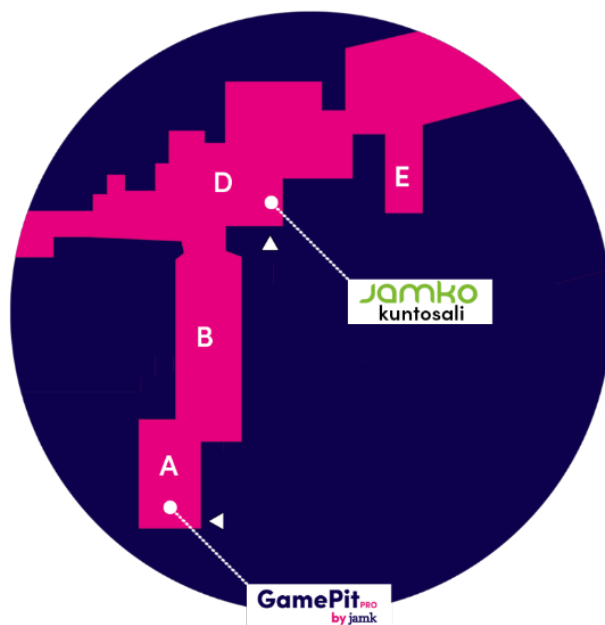
# GYM

Jamko gym is in the basement of D-wing, in space DK25.

Access to the gym is via the outside, using the round GamePit tag labeled “gym” provided with your GamePit booking. Use of the gym must be requested at the time of booking or at the latest upon arrival.

Please follow the instructions posted in the gym and leave the facilities tidy when you leave!

**Scan the QR code for more information about the gym and opening hours.**



## Gym opening hours (exceptions during holiday periods)

Monday to Friday: 8:00 AM – 8:00 PM

Saturday: 8:00 AM – 2:00 PM

The gym is closed on public holidays and when the campus is closed.



# CAFE AND RESTAURANT SERVICES

**Café Curve serves in the main lobby D1 of the Rajakatu campus as follows:**

Breakfast on weekdays: 7:45 AM – 10:00 AM

Café counter on weekdays: 9:00 AM – 5:00 PM

Café counter on Saturdays: 9:00 AM – 2:30 PM

Lunch on weekdays: 10:30 AM – 6:00 PM (€8.53 / person)

Lunch on Saturdays: 11:00 AM – 12:30 PM (€8.53 / person)

Access to the café is through the outdoor GamePit Pro A3 door, entrance through the main doors. **Please do not walk through the campus interior to access the café!**

Café Curve is closed on public holidays and the campus is closed.

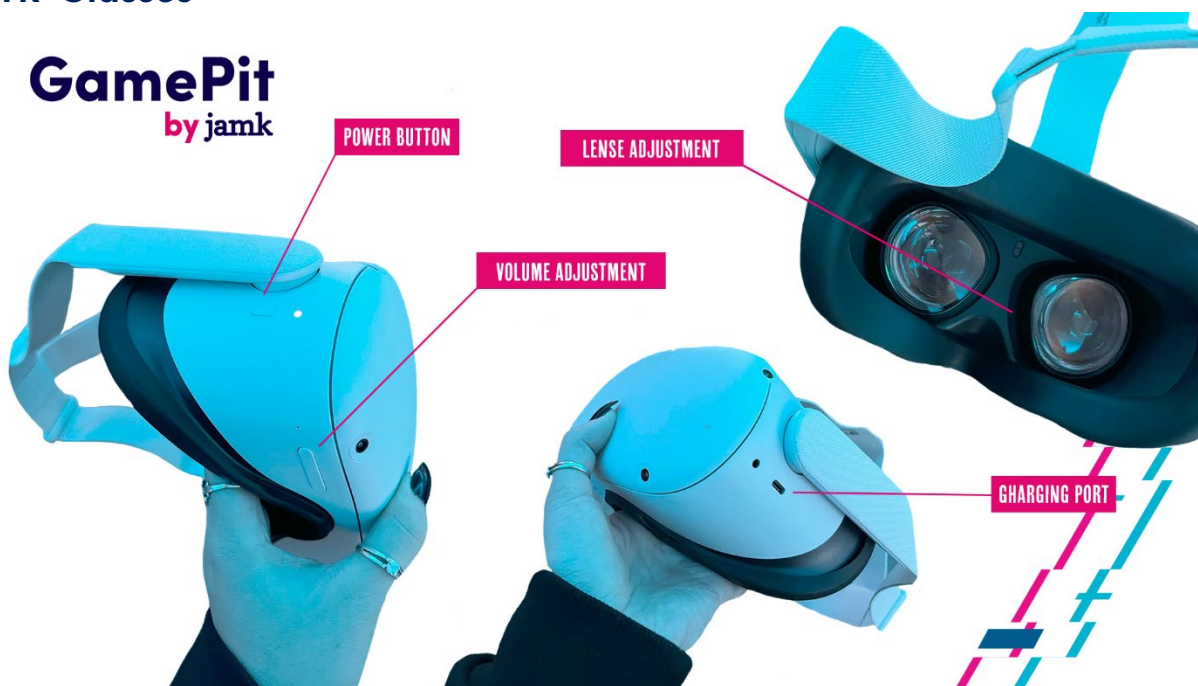
## Catering

Ask for a catering service quote when making your reservation. We offer breakfast, lunch, and dinner options delivered directly to the GamePit gaming space if needed.

# VR GADGETS

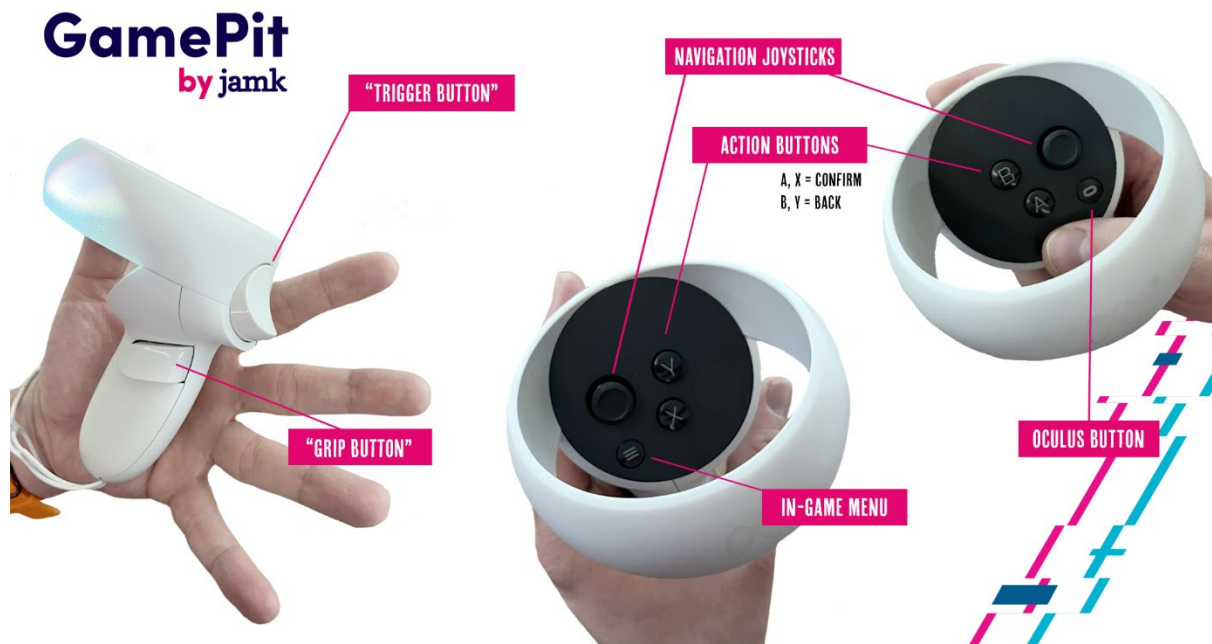
You have access to Meta Quest 2 virtual reality headsets, and you can find the basic operations in this manual. Please make sure that the sets of glasses you use remain consistent, and do not mix controllers and glasses belonging to different sets. Each part of the glasses set is labeled and named.

## VR-Glasses



- It's a good idea to charge the glasses whenever they're not in use! The charging cable and adapter can be found in the gray storage box for the glasses.
- In the storage box, there is also a separate plastic spacer, which should be used if the player needs to wear glasses.
- Adjust the glasses to fit the player using the head straps. You can also adjust the distance of the lenses from the inside of the glasses by clicking the lenses.
- Please clean the black rubber parts of the glasses after use with a disinfectant wipe!

## Controllers



- Wrist straps should be used for safety reasons!
- Menu navigation is mainly done by pointing and pressing the trigger.
- The Oculus button on the right controller returns the user to the main menu.
- You can access the in-game menu by pressing the menu button on the left controller.

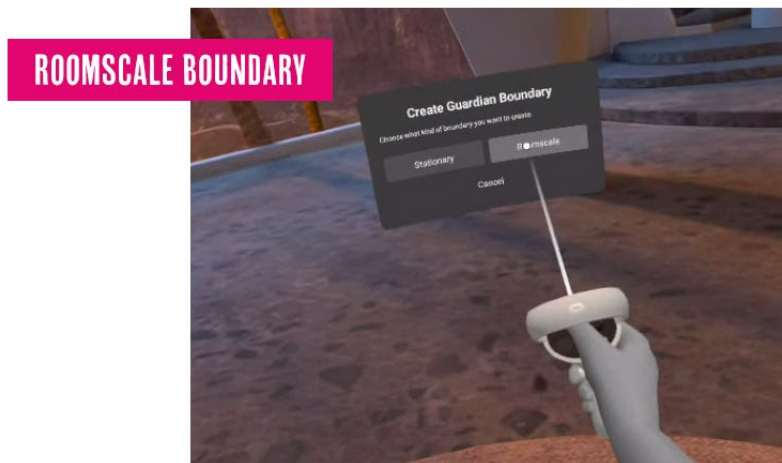
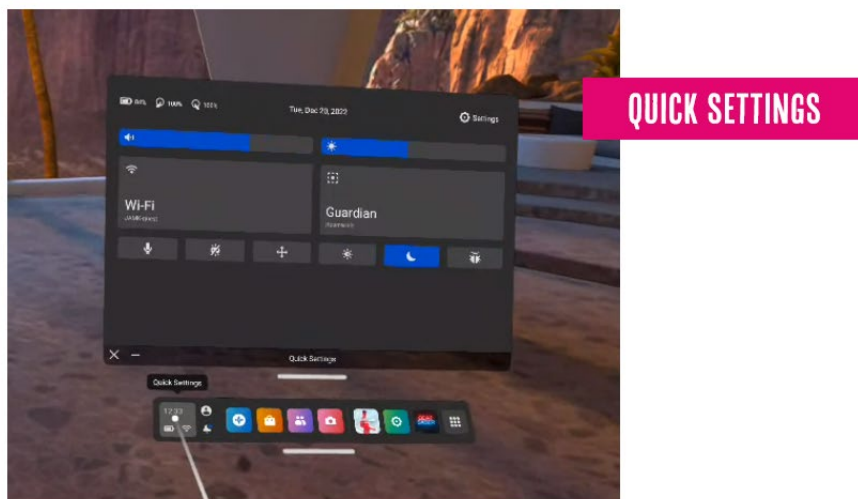
## Using the VR Glasses

- The logged-in user on the device is GamePitPro 1/2/3/4; do not log out the user!
- If the device prompts for a user profile when starting, the selection should be skipped.
- Do not log in with personal user accounts on the glasses.

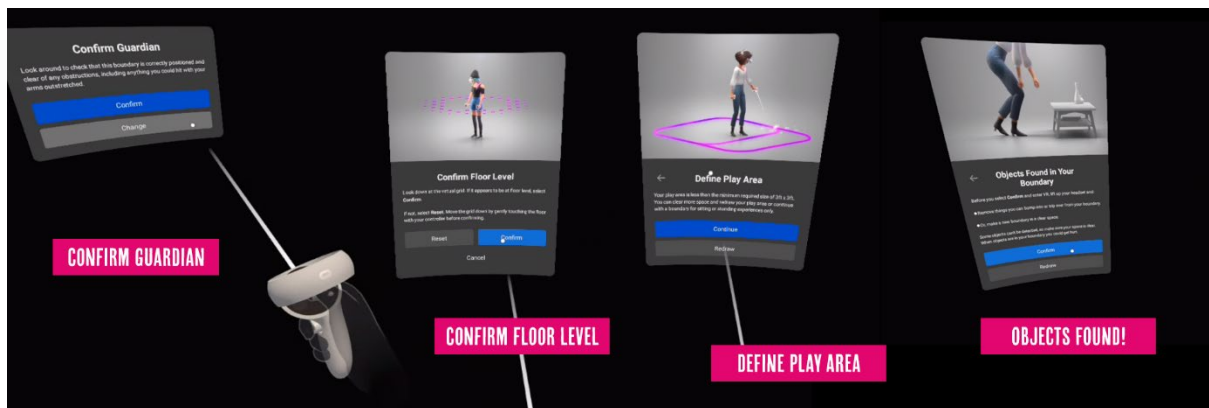
## Drawing the play area

It's recommended to designate a spacious area with approximately 2 x 2 meters of free space for the play area. The glasses offer either a stationary boundary, which creates a fixed play area of 1 x 1 meter around the player, or a self-drawn roomscale boundary. We recommend that the player draws the roomscale boundary with the controller in a self-determined area.

- Select "Quick Settings" from the left side of the main menu.
- From the menu that appears, select "Guardian."
- Choose "Roomscale" from the guardian selection box.
- Confirm the floor level by touching the floor with the controller or adjusting the floor level using the controller's joystick.



- Draw the play area around yourself by pressing the trigger. If there are obstacles in the area, you will receive a separate notification about it
- If you want to define a completely new play area, step out of the existing area and select "Room Scale Boundary."
- If you need to change the existing play area, navigate to Quick Settings by pressing the leftmost icon in the menu bar and select "Guardian" from there.



## Selecting the application



- The application menu opens from the right side of the main menu behind the gray grid button.
- You can choose from four complete games and a few demos.
- Please do not add or remove applications from the library on your own!

## What should we play today?

### Beat Saber

A rhythm game where the player's goal is to collect points and combo moves by hitting approaching musical beats with "lightsabers" to the rhythm of the music. Be prepared to break a sweat while dodging obstacles and mines!

To enable "No Fail" mode, navigate to the menu where songs are selected. When looking to the left, you'll see the option in the menu.

Pro tip: You can find the game tutorial in the main menu behind the question mark icon.

### Superhot

An action game where time only moves when the player moves! Throw, punch, grab, and shoot! Overcome challenges and defeat opponents by manipulating time just like in The Matrix.

### Wander

Experience Google Maps in a new way! Travel virtually around the world and look around as if you were there yourself.

Pro tip: If the menu obstructs your view, you can hide it by pressing the menu button on the left controller or alternatively the B / Y buttons.

### Pistol Whip

A fast-paced VR game combining rhythm gameplay, precise shooting, and quick reflexes. As the player moves forward, enemies appear and must be defeated to the rhythm and beat of the music.

Pro tip: Options such as no-fail mode can be found in the main menu on the left.

### Creed: Rise to Glory (Demo)

A boxing game based on the Rocky series. Train, fight, and knock out opponents in the boxing ring like Adonis Creed!

### Journey of the Gods (Demo)

A first-person action-adventure game that combines puzzles and combat. Solve ancient mysteries and obtain the mystical power of the gods!